

# @Pel.Net WeatherMon®

-- @Pel.Net 2009



-

## W32 WeatherMon® v1.0(stable)

Version: 1.00  
State: stable  
Build: 0001  
Language: Visual C#  
Codename: Sunstorm

Public download link: <http://pelliemail.no-ip.info/weathermon>

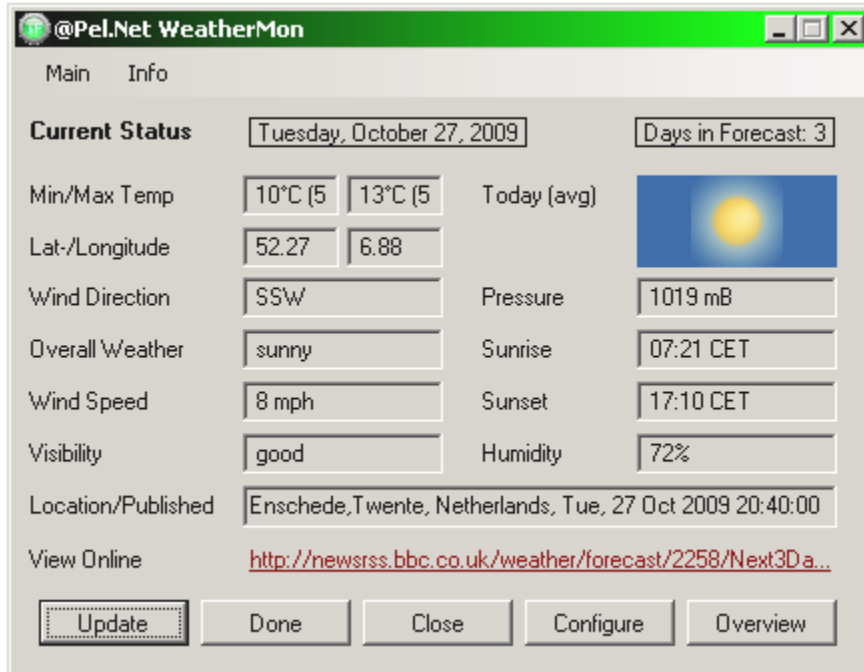
Internal use: yes

Remote use: yes

Internal download: S:\PUBLIC

# 1 Introduction

The @Pel.Net WeatherMon® tool is not intended as a serious meteorological aid, nor does @Pel provide any warranty for the information produced by this application. This program is simply provided as a lightweight, short-term weather monitoring solution with the capability of logging any information to the Windows® event logging system.



## **2 General Information**

You are free to use this application at no further cost, provided that any problems which may occur during it's usage related directly to the design of WeatherMon® are relayed to @Pel.Net® as soon as possible, so that we can continuously improve the products and services relating to this item.

Any artwork used in this application is either the property of @Pel.Net® or affiliate developers who shall remain unnamed for the time being.

### 3 System Requirements

This application was written entirely in C#.Net 2.0 and therefore requires this framework to be installed in order to run the application.

Originally the target platform was an x86 32bit Intel machine running Windows® XP SP2 or higher, however we have also managed to verify the compatibility with Windows® Vista and are looking forward to testing it on Windows® 7 and Server 2008.

We are also aware that this application can be used on various other operating systems like for instance Windows® 2000 SP4 (provided the .Net Framework 2.0 is installed).

The following minimum requirements are estimated and therefore may not be entirely correct:

Minimum System requirements:

#### **Operating System**

Windows 2000 SP3/4

#### **Additional Software Requirements**

.Net Framework 2.0 (or higher)

#### **Hardware**

**Video:** VGA 640x480, 256 colors

**RAM:** 16MB.

**Harddisk:** 2MB

Recommended System requirements

#### **Operating System**

Microsoft Windows® 32/64bit with 'mscorlib.dll' from the .Net Framework  
Designed for Microsoft® Windows® XP SP2

#### **Hardware**

**Video:** VGA 800x600, 16bit colors

**RAM:** 16MB, up to 40MB recommended when running the application for long periods of time. Currently the official source of the RSS XML information (BBC Broadcasting Ltd) only supplies 3 day forecast. Should the BBC start to provide feeds including more than 3 days the functionality of the application should not change, however this is untested as of yet. Also note that the more days are included in the XML feed, the more RAM and CPU time will be required by the client application.

**Harddisk:** 2MB

**Tested OS's:**

- Windows XP (SP2 32bit)
- Windows 2003 Server R2 (32bit)
- Windows 2000 (SP4)
- Windows Vista (SP1 32bit)

**Untested:**

- Windows Vista(64)

**Not supported:**

- Windows NT4.0 (SP6a)
- Windows 95 (OSR2)
- Windows 98 (SE)
- Windows ME

**Bugs:**

N/A

## 4 Functions

Extended functionality of the @Pel.Net WeatherMon® tool:

When starting the main executable of the program, you may use the following syntaxes or command line parameters:

Command line arguments:

-help		Displays this help.
-hide		Hides the program in the systray.
-debug		Starts the application in debug mode (2). NOTE: this parameter will be overridden by a config file
-forecast		Displays the forecast as soon as the app starts.
-about		Displays version info as soon as the app starts.
-config=xxx.xml		Loads the specified XML file instead of 'config.xml'

When running the WeatherMon® tool with the even logging option enables one or more of the following event ID's may be logged in the WeatherMon® system log. These events can be viewed like normal Windows® events in the eventviewer MMC snap-on or by running eventvwr.exe.

Event ID's:

- 0 = Application started
- 1 = Feed updated/refreshed
- 2 = Config file loaded
- 3 = Config file saved
- 4 = Exiting application
- 5 = File and/or I/O error
- 6 = RSS Feed error

## 5 Usage

The following instructions are the typical installation instructions. Mass deployment instructions can be found in Chapter 6.

1<sup>st</sup> start the application with it's default configuration. (image01)

2<sup>nd</sup> select Configure and set the application settings. (image02)

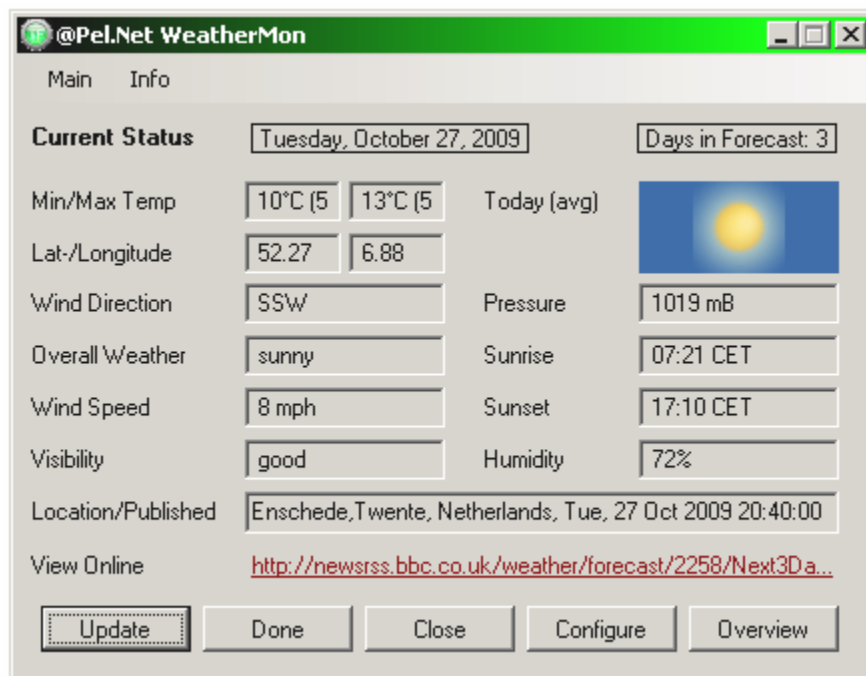
3<sup>rd</sup> (optional) select Browse and select a location from the list, or enter a query. (image03)

4<sup>th</sup> click Update in the main program window.

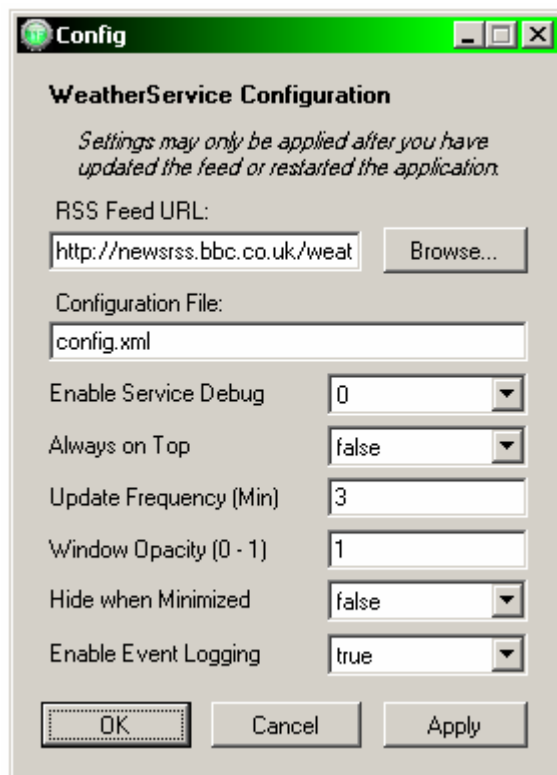
If no errors occur and the content of the window is updated, all is working correctly, and you are ready to use WeatherMon®!

5<sup>th</sup> (optional) select Save Config from the main window, and save your configuration to an XML file. (image04, image05)

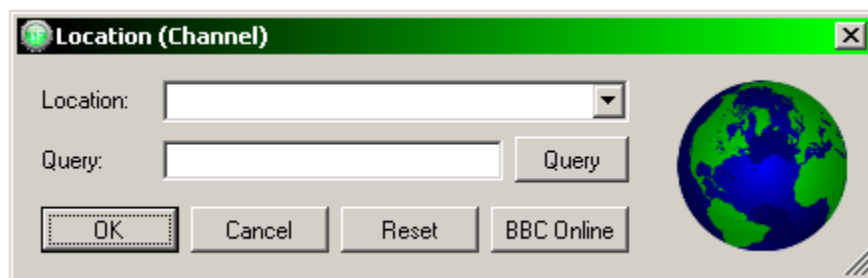
### [image01]



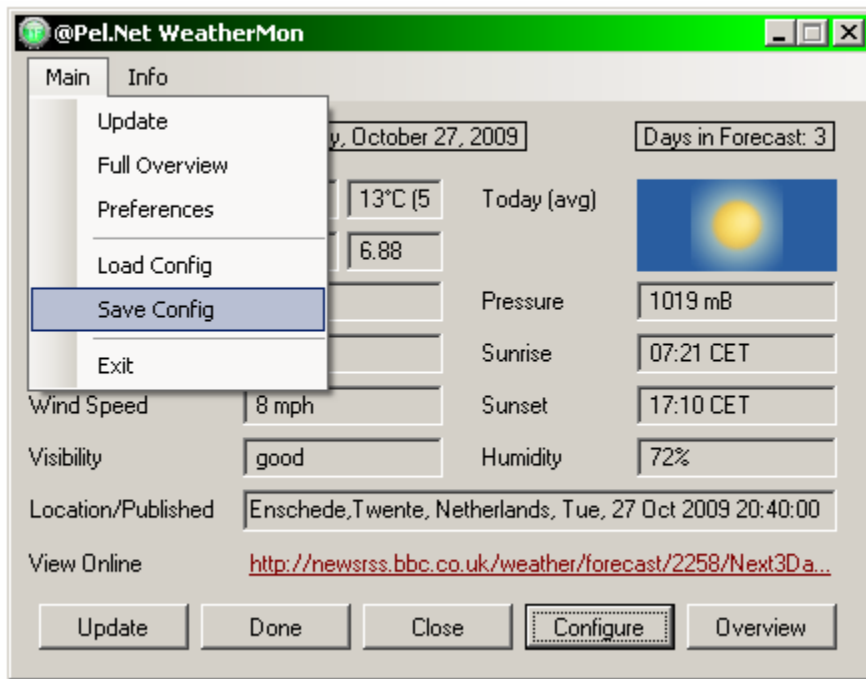
[image02]



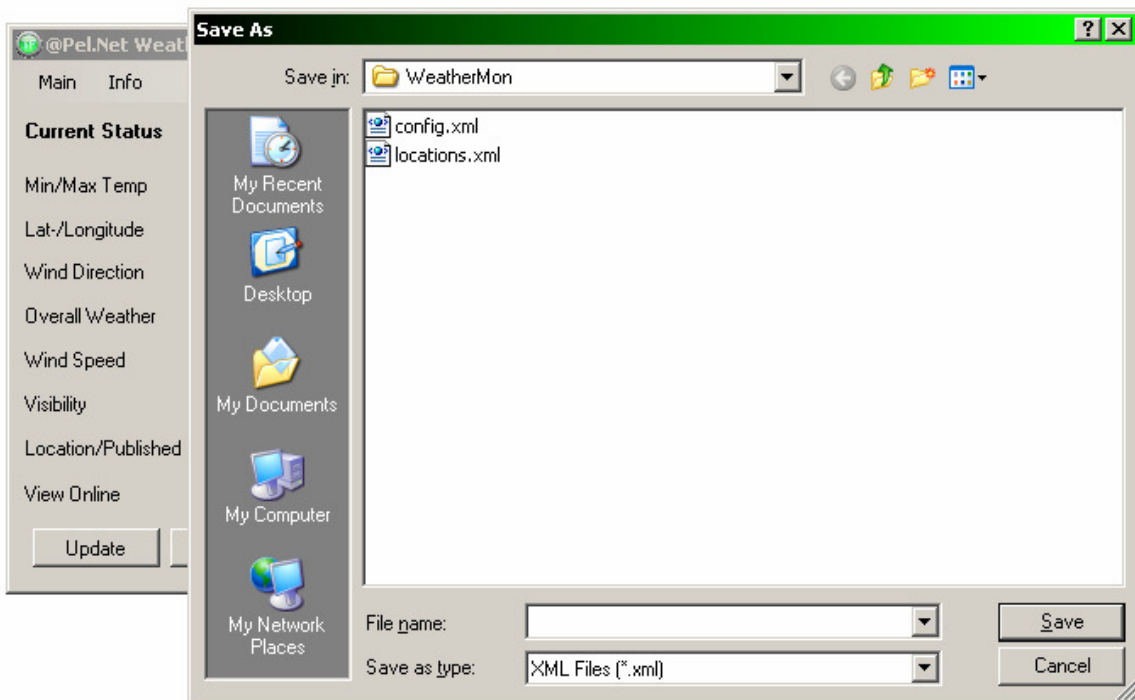
[image03]



[image04]



[image05]



## 6 Deployment

The following instructions are intended for setups where (mass-) deployment is required. Please note that many automated utilities may be developed in the future to easily apply configuration updates and webbased configuration.

The following is the layout of a typical XML configuration file for WeatherMon®.

Note: ALL fields are required, even if the default value is to be used when loading a configuration file.

```
<?xml version="1.0" encoding="utf-8" standalone="yes"?>
<!-- This is an autogenerated WeatherService config file -->
<configuration type="s:complexttype">
<debug type="s:integer">0</debug>
<rssurl
type="s:string">http://newsrss.bbc.co.uk/weather/forecast/2258/Next3DaysRSS.xml
l</rssurl>
<ontop type="s:boolean">>false</ontop>
<updfreq type="s:integer">3</updfreq>
<opacity type="s:double">0.9</opacity>
<hideminimized type="s:boolean">>false</hideminimized>
<logevents type="s:boolean">>true</logevents>
</configuration>
```

Please note that you are allowed to use a many or few location as you wish, however the XML structure must be preserved in all cases.

The following is the layout of a typical XML location listing file for WeatherMon®.

```
<?xml version="1.0" encoding="utf-8" standalone="yes"?>
<!-- This is an autogenerated WeatherService config file-->
<locations type="s:complexttype">
<item>
<number type="s:integer">1</number>
<location type="s:string">Belfast, United Kingdom</location>
<rssurl
type="s:string">http://newsrss.bbc.co.uk/weather/forecast/1Next3DaysRSS.xml</r
ssurl>
</item>
<item>
<number type="s:integer">2</number>
<location type="s:string">Birmingham Airport, United Kingdom</location>
<rssurl
type="s:string">http://newsrss.bbc.co.uk/weather/forecast/2Next3DaysRSS.xml</r
ssurl>
```

```
</item>
<item>
<number type="s:integer">3</number>
<location type="s:string">Bristol, United Kingdom</location>
<rssurl
type="s:string">http://newsrss.bbc.co.uk/weather/forecast/3Next3DaysRSS.xml</r
ssurl>
</item>
<item>
<number type="s:integer">4</number>
<location type="s:string">Cardiff, United Kingdom</location>
<rssurl
type="s:string">http://newsrss.bbc.co.uk/weather/forecast/4Next3DaysRSS.xml</r
ssurl>
</item>
```

WeatherMon® creates an entry in the Windows® registry when being installed, however this is a complementary function of the MSI installer package, and is strictly speaking not required by the application. In the even that you need to repackage and deploy WeatherMon® you can simply take the extracted files in the %programfiles%\WeatherMon folder, modify and build them into a new installer again.

## 7 Feedback and Support

We at @Pel.Net® are aware that despite vigorous testing and debugging procedures, applications are still vulnerable to hang, crash or otherwise display incorrect behavior.

Because of this eventuality, @Pel.Net® has prepared a number of support channels which can be used not only for assistance but also for establishing bugs in the software and/or limitations in the service provided. Should you encounter such a problem, @Pel.Net® would like to urge you to contact us as soon as possible, to ensure that any documented problems can be resolved in future builds of the program.

In the case that you are under the assumption that you may have discovered a bug, please view the support forum designated to this application. If the bug is not listed there, please also check the @Pel.Net® Knowledgebase and verify that your discovery has not already been established/reported. If you are experiencing program related trouble which does not directly indicate a failure in the application itself, you can contact the development team. Urgent problems are unlikely with this program, however, you can still file a service request should the need arise. Please see the links below for the various support options available to you:

### Email contact:

[pellix@concepts.nl](mailto:pellix@concepts.nl)  
[administrator@pel.net](mailto:administrator@pel.net)  
[support@pel.net](mailto:support@pel.net)

Administrator @Pel.Net (external mail)  
Administrator @Pel.Net (internal mail)  
File a service request by mail (internal)

### Support URL's:

<a href="http://pelliemail.no-ip.info">http://pelliemail.no-ip.info</a>	Main @Pel.Net® Web Portal
<a href="http://pelliemail.no-ip.info/weathermon">http://pelliemail.no-ip.info/weathermon</a>	Product Information page
<a href="http://pelliemail.no-ip.info/support/topic.asp?TOPIC_ID=182">http://pelliemail.no-ip.info/support/topic.asp?TOPIC_ID=182</a>	@Pel.Net® Support for WeatherMon
<a href="http://pelnet.no-ip.org/?cat=kb">http://pelnet.no-ip.org/?cat=kb</a>	@Pel.Net® Knowledgebase
<a href="http://pelnet.no-ip.org/?cat=helpdesk">http://pelnet.no-ip.org/?cat=helpdesk</a>	@Pel.Net® Support Request

## 8 License

### TERMS OF USE (the “TERMS”)

#### ACCEPTANCE OF TERMS

Services provided at @Pel.Net® are "as is" with no express or implied warranty for accuracy or accessibility.

@Pel.Net® (“PelNet”) has done its utmost to ensure that the material and calculations displayed on @Pel.Net® are accurate. However, errors may occur. @Pel.Net® accepts no responsibility or liability for any incorrect material.

Use this site at your own risk.

You understand and agree that the use of @Pel.Net® may include advertisements and that these advertisements are necessary for @Pel.Net® to provide its services and material (the “Service”).

Unless explicitly stated otherwise, any new features that augment or enhance the current Service, including the release of new @Pel.Net® properties, are subject to the Terms.

Under no circumstances will @Pel.Net® be liable in any way for any @Pel.Net® content, including, but not limited to, for any errors or omissions in any content, or for any loss or damage of any kind incurred as a result of the use of or reliance upon any content posted, emailed, transmitted, or otherwise made available via the Service.

You agree that you must evaluate, and bear all risks associated with, the use of any @Pel.Net® content, including any reliance on the accuracy, completeness, or usefulness of such content.

You acknowledge and expressly consent to @Pel.Net® accessing, preserving, and disclosing your account information if required to do so by law or in the good faith belief that such access, preservation or disclosure is reasonably necessary to: (a) comply with legal process; (b) enforce the Terms; (c) respond to claims that any @Pel.Net® content violates the rights of third-parties; (d) respond to your requests for customer service; or (e) protect the rights, property, or personal safety of @Pel.Net®, its users and the public.

#### PERMITTED USE

Except as expressly permitted in the Terms, you agree not to reproduce, duplicate, copy, sell, trade, or exploit for any commercial purposes, any portion of the Service , use of the Service, or access to the Service.

You further acknowledge and agree that content contained in sponsor advertisements or information presented to you through the Service or advertisers is protected by copyrights, trademarks, service marks, patents, or other proprietary rights and laws. Except as expressly authorized by @Pel.Net® or advertisers, you agree not to modify, rent, lease, loan, sell, distribute or create derivative works based on the Service or the software, in whole or in part.

This software is provided "as is" without express or implied warranty.

## INTERNATIONAL COMPLIANCE

Recognizing the global nature of the Internet, you agree to comply with all local rules regarding online conduct and acceptable content. Specifically, you agree to comply with all applicable laws regarding the transmission of technical data exported from Canada or the country in which you reside.

## MODIFICATIONS TO SERVICE

@Pel.Net® reserves the right at any time to modify or discontinue, temporarily or permanently, the Service (or any part thereof) with or without notice. You agree that @Pel.Net® will not be liable to you or to any third party for any modification, suspension or discontinuance of the Service.

## DEALINGS WITH ADVERTISERS

Your correspondence or business dealings with, or participation in promotions of, advertisers found on or through the Service, including payment and delivery of related goods or services, and any other terms, **WARRANTIES, REPRESENTATIONS, OR CONDITIONS** associated with such dealings, are solely between you and such advertiser. You agree that @Pel.Net® is not responsible or liable for any loss or damage of any sort incurred as a result of such dealings or as a result of the presence of such advertisers on the Service.

## LINKS

The Service may provide, or third parties may provide, links to other World Wide Web sites or resources. Because @Pel.Net® has no control over such sites and resources, you acknowledge and agree that @Pel.Net® is not responsible for the availability of such external sites or resources, and does not endorse and is not responsible or liable for any content, advertising, products, or other materials on or available from such sites or resources. You further acknowledge and agree that @Pel.Net® is not responsible or liable, directly or indirectly, for any damage or loss caused or alleged to be caused by or in connection with use of or reliance on any such content, goods or services available on or through any such site or resource.

## DISCLAIMER OF WARRANTIES, REPRESENTATIONS, AND CONDITIONS

YOU EXPRESSLY UNDERSTAND AND AGREE THAT:

- (a) YOUR USE OF THE SERVICE IS AT YOUR SOLE RISK. THE SERVICE IS PROVIDED ON AN "AS IS" AND "AS AVAILABLE" BASIS. @Pel.Net® EXPRESSLY DISCLAIMS ALL WARRANTIES, REPRESENTATIONS AND CONDITIONS OF ANY KIND, WHETHER EXPRESS OR IMPLIED, INCLUDING, BUT NOT LIMITED TO THE IMPLIED WARRANTIES, REPRESENTATIONS AND CONDITIONS OF MERCHANTABILITY, FITNESS FOR A PARTICULAR PURPOSE AND NON-INFRINGEMENT.
- (b) @Pel.Net® MAKES NO WARRANTY THAT (i) THE SERVICE WILL MEET YOUR REQUIREMENTS, (ii) THE SERVICE WILL BE UNINTERRUPTED, TIMELY, SECURE, OR ERROR-FREE, (iii) THE RESULTS THAT MAY BE OBTAINED FROM THE USE OF THE SERVICE WILL BE ACCURATE OR RELIABLE, (iv) THE QUALITY OF ANY PRODUCTS, SERVICES, INFORMATION, OR OTHER MATERIAL PURCHASED OR OBTAINED BY YOU THROUGH THE SERVICE WILL MEET YOUR EXPECTATIONS, AND (v) ANY ERRORS IN THE SOFTWARE WILL BE CORRECTED.
- (c) ANY MATERIAL DOWNLOADED OR OTHERWISE OBTAINED THROUGH THE USE OF THE SERVICE IS DONE AT YOUR OWN DISCRETION AND RISK AND THAT YOU WILL BE SOLELY RESPONSIBLE FOR ANY DAMAGE TO YOUR COMPUTER SYSTEM OR LOSS OF DATA THAT RESULTS FROM THE DOWNLOAD OF ANY SUCH MATERIAL.
- (d) NO ADVICE OR INFORMATION, WHETHER ORAL OR WRITTEN, OBTAINED BY YOU FROM @Pel.Net® OR THROUGH OR FROM THE SERVICE SHALL CREATE ANY WARRANTY NOT EXPRESSLY STATED IN THE TERMS.

## LIMITATION OF LIABILITY

YOU EXPRESSLY UNDERSTAND AND AGREE THAT @Pel.Net® SHALL NOT BE LIABLE FOR ANY DIRECT, INDIRECT, INCIDENTAL, SPECIAL, CONSEQUENTIAL, OR EXEMPLARY DAMAGES, INCLUDING BUT NOT LIMITED TO, DAMAGES FOR LOSS OF PROFITS, GOODWILL, USE, DATA, OR OTHER INTANGIBLE LOSSES (EVEN IF @Pel.Net® HAS BEEN ADVISED OF THE POSSIBILITY OF SUCH DAMAGES), RESULTING FROM: (i) THE USE OR THE INABILITY TO USE THE SERVICE; (ii) THE COST OF PROCUREMENT OF SUBSTITUTE GOODS AND SERVICES RESULTING FROM ANY GOODS, DATA, INFORMATION, OR SERVICES PURCHASED OR OBTAINED OR MESSAGES RECEIVED OR TRANSACTIONS ENTERED INTO THROUGH OR FROM THE SERVICE; (iii) UNAUTHORIZED ACCESS TO OR ALTERATION OF YOUR TRANSMISSIONS OR DATA; (iv) STATEMENTS OR CONDUCT OF ANY THIRD

PARTY ON THE SERVICE; OR (v) ANY OTHER MATTER RELATING TO THE SERVICE.

## EXCLUSIONS AND LIMITATIONS

SOME JURISDICTIONS DO NOT ALLOW THE EXCLUSION OF CERTAIN WARRANTIES, REPRESENTATIONS AND CONDITIONS OR THE LIMITATION OR EXCLUSION OF LIABILITY FOR INCIDENTAL OR CONSEQUENTIAL DAMAGES. ACCORDINGLY, SOME OF THE ABOVE LIMITATIONS MAY NOT APPLY TO YOU.

## GENERAL INFORMATION

**Entire Agreement.** The Terms constitute the entire agreement between you and @Pel.Net® and govern your use of the Service, superseding any prior agreements, oral or written, between you and @Pel.Net® with respect to the Service.

**Waiver and Severability of Terms.** The failure of @Pel.Net® to exercise or enforce any right or provision of the Terms shall not constitute a waiver of such right or provision. If any provision of the Terms is found by a court of competent jurisdiction to be invalid, the parties nevertheless agree that the court should endeavor to give effect to the parties' intentions as reflected in the provision, and the other provisions of the Terms remain in full force and effect.

**Statute of Limitations.** You agree that regardless of any statute or law to the contrary, any claim or cause of action arising out of or related to use of the Service or related to the Terms must be filed within one (1) year after such claim or cause of action arose or be forever barred.

**Further Assurances.** You agree to use reasonable efforts to do, make, execute, deliver, or cause to be done, made, executed, or delivered, all such further acts, documents, and things as @Pel.Net® may reasonably require from time to time for the purpose of giving effect to these Terms, including regularly reviewing the Terms and updating your registration information.

The section titles in the Terms are for convenience only and have no legal or contractual effect.